



# Year 7 Welcome and Information Evening

Meet the Form Tutor



# Form Time

35 minutes from 8:30am

Attendance tracking

Daily planned Form Time tasks

Assemblies

Uphold values and celebrate successes

Enabling everyone to thrive – acting with kindness, determination and respect.

# Tutor Time Schedule: 3-part structure



Time	Activity
8:30-8:40	Silent reading
8:40-9:00	Main planned activity
9:00-9:05	Ready to leave routine

Enabling everyone to thrive – acting with kindness, determination and respect.

# Year 7 Weekly Plan



	Monday	Tuesday	Wednesday	Thursday	Friday
7	Assembly	PSHCE	Reading	News	EDI / WofW

Enabling everyone to thrive – acting with kindness, determination and respect.

# Form Time Reading Programme



Reading holds all sorts of intellectual advantages: the more you read the more intelligent you will become.



Enabling everyone to thrive – acting with kindness, determination and respect.

# What is the Form Time Reading Programme?



Once a week the Form Tutor will read aloud to the Form Group.



Enabling everyone to thrive – acting with kindness, determination and respect.

# PSHCE at KS3

Form Time

Timetabled lessons

PSHCE Days

Enrichment Week



Enabling everyone to thrive – acting with kindness, determination and respect.



# Equality, Diversity and Inclusion



Enabling everyone to thrive – acting with kindness, determination and respect.



# Current Affairs



- Weekly Quiz
- Newsround



Enabling everyone to thrive – acting with kindness, determination and respect.

# LPGS Uniform consistency: Are you good to go?



- BAGS are backpacks
- JACKETS are black or navy and can be worn in corridors/canteens (hoods down) but not in classrooms

- HAIR colour is natural
- Hair bands and all scarfs are navy/black
- No MAKE-UP
- NAILS are natural and finger-tip length

1 STUD EARRING per ear  
• It should fit in this circle  
No other jewellery



Black SHOES that can be polished.  
• Not trainers (e.g. Airforces) or boots

BLAZER (Y7-Y9)  
CARDIGAN (Y10-Y11)



OPEN NECKED white shirt (long or short sleeve)  
LANYARDS must be worn and visible at all times



Plain navy SOCKS  
(ankle or knee)



Navy v-neck JUMPER is optional



Langley SKIRT is worn between mid calf and knee  
Langley TROUSERS with logo on



## WHY?

Uniform is a key way we signal we belong to one community and uphold our high standards and reputation that benefit everyone. We also believe in the liberating environment that a girls' school can provide; our expectations regarding hair, make-up, nails and jewellery are part of focusing on who we are on the inside. Thank you for respecting our uniform

# Shoes – additional guidance



Good for school



Not okay for school



# Jewellery & accessories – additional guidance



Good for school



Not okay for school



Enabling everyone to thrive – acting with kindness, determination and respect.

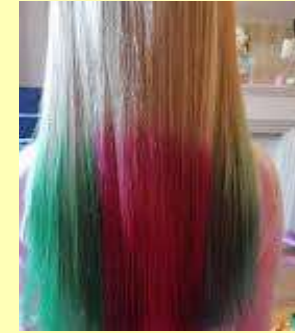




# Make-up / 'beauty enhancement' – additional guidance



**Good for school**



**Not okay for school**

Unnatural colours / fake eye lashes / long coloured nails / fake tan



**Enabling everyone to thrive – acting with kindness, determination and respect.**

# Attendance



High attendance supports high achievement

Students complete missed work



# Guidance for Absence



Hospital appointment  
which cannot be  
arranged outside school  
hours

Attendance at  
examinations (such as  
music grades)

Attendance at funeral  
(immediate family only)

Religious observance  
(this must not exceed 4  
days)

Participating in a  
significant extra-  
curricular activity (e.g.  
sport, performing art)

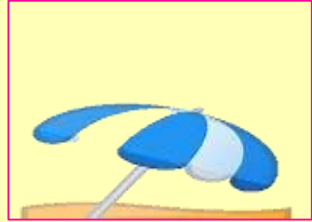


Enabling everyone to thrive – acting with kindness, determination and respect.

# Unauthorised Absence



Medical



Holiday



Leisure



Birthday

# Entering and Leaving the School Site

---



Students who arrive in school between 7:45-8:00 can go to the canteen or the library. At 8:05 the student entrance opens and students should enter through this gate. All students must be in Form Time by 8:30.

---

Breakfast is available for all students.

---

Schools finishes at 15:10 unless attending extra-curricular activity or a detention.

---



**Enabling everyone to thrive – acting with kindness, determination and respect.**

# Communication routes



---

Letters

---

Planner

---

Email (staff initials followed by @lpgs.bromley.sch.uk)

---

Telephone

---

Social Media

---

Surveys

# Any Questions?



Enabling everyone to thrive – acting with kindness, determination and respect.