



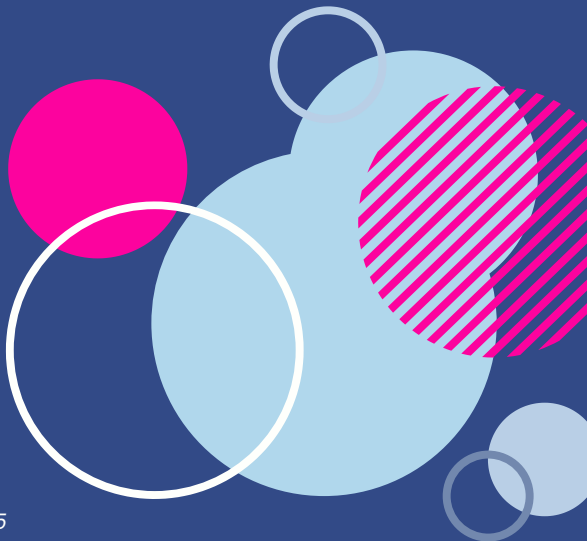
PROSPECTUS AND COURSE DETAILS 2025

Langley Park School for Girls
Sixth Form

www.lpgs.bromley.sch.uk

Contents

Welcome Message	1
The Sixth Form Curriculum	2
Choosing A Level Courses	3
The LPGS6 Way	6
How to Apply	12
LPGS6 Subjects	13
<i>A Level Subjects</i>	14
<i>Vocational Subjects</i>	40



Welcome Message

Welcome to our supportive, friendly and high achieving Sixth Form community. Here at LPGS6 you will be encouraged and supported to achieve your potential in your academic studies, personally and socially.

Our students are highly motivated and ambitious, benefiting from high quality teaching, academic support and wider opportunities beyond the classroom in a wide range of A-Level and vocational courses. Expert and passionate teachers engage students in challenging, memorable and enjoyable learning experiences within lessons, as well as drawing on their experiences as examiners and detailed knowledge of exam specifications to maximise our students' chances of success. As a result, our students consistently attain very highly in examinations and realise their ambitions for higher education, apprenticeships and employment.

Alongside academic support and intervention from willing and committed teachers, pastoral care from our team of tutors, mentors, and wellbeing team ensures you receive personalised attention and support as you navigate your Sixth Form studies.

An extensive programme of enrichment opportunities, clubs and societies contributes significantly to our learners' enjoyment and our students develop strong relationships with peers and adults and memories and friendships, which will last for a lifetime. You will be supported to be resilient, adaptable and confident, with transferable knowledge and skills that will equip you for life.

The Careers Academy at LPGS6 sets us apart from many other schools and colleges. Tailored and individualised programmes of careers advice, information and guidance are enhanced by frequent opportunities to engage with employers, understand the world of work and possible careers in every imaginable field including architecture, computing, education, engineering, finance, law, medicine, psychology.

Our Sixth Form vision 'Today's learners, tomorrow's leaders' is enacted through the various student leadership opportunities on offer within our Sixth Form and the key role played by students in Years 12 and 13 in developing themselves, others and our school.

Our commitment to you is to support you to achieve highly, enjoy your Sixth Form journey with us and realise your goals and ambitions.

We look forward to welcoming you to the LPGS6 community in September.

Mr S Whittle

Headteacher



The Sixth Form Curriculum

There is a wide range of Sixth Form courses available in both A-Level and vocational qualifications.

Entry to our Sixth Form courses is subject to the Minimum Academic Entry criteria and a GCSE average point score (APS) as shown:

APS score	Programme of study
4.0–4.8	<ul style="list-style-type: none">• Double Vocational qualification + Single Vocational or;• Double Vocational qualification + 1 A-Level
4.9–5.2	<ul style="list-style-type: none">• 2 A-Levels + 1 Vocational qualification (Single BTEC/CTEC or Diploma)
5.3–6.9	<ul style="list-style-type: none">• 3 A-Levels
7.0+	<ul style="list-style-type: none">• Eligible for 4 A-Levels or;• 3 A-Levels + Extended Project Qualification <p><i>Please note that this is not compulsory</i></p>

Your APS score is taken from your highest 8 grades and must include English and Maths.

In addition, you must meet the subject specific entry criteria for your chosen courses.



Choosing A Level Courses

At LPGS6, we offer a wide variety of A-Level courses. When selecting your subjects, consider the following factors:

What subjects do you enjoy?

Choosing subjects you genuinely enjoy is crucial. A-Level courses are academically challenging and it's essential to stay motivated and be prepared to succeed from day one. Be sure to thoroughly research the course content, especially if you are considering a subject new to you.

Which subjects are your strength?

Select subjects where you have a strong track record of success. If you are opting for a new subject, ensure that you have performed well in related GCSE subjects. It's important to pick subjects in which you believe you will achieve good grades. Poor grades can be just as much of a barrier to university entry or your future career as choosing the wrong subjects.

What are your predicted GCSE grades?

Each A-Level course has specific entry requirements. Please check the GCSE criteria for the courses you're interested in, which can be found at the top of each subject's page.

Which subjects align with your career or degree aspirations?

Before deciding on your A-Levels, research the subject requirements for your desired career or degree course. Some fields have specific subject pre-requisites. For example:

- Medicine, Dentistry, and Veterinary Science generally require Biology and another science, and some universities may also request Mathematics.
- Engineering or Computer Science typically require Mathematics and Physics.
- Architecture often prefers a Visual Art or Design subject, alongside Mathematics or Physics.
- Art, Music, and Geography degrees usually expect these subjects to be studied at A-Level.
- Some universities prefer both Mathematics and Further Mathematics for students pursuing Mathematics degrees.

Use the UCAS Course Search tool to explore university course requirements and consult your teachers for guidance on potential career paths.

What if you are unsure about your future direction?

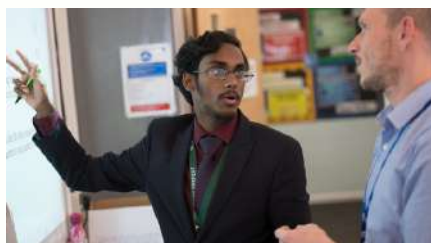
If you are uncertain about what to study at university, there are A-Level subjects that offer flexibility, keeping many options open. Choosing a balanced mix of subjects that match your strengths and interests is a good starting point. Remember, it is essential not to feel pressured into choosing subjects you are not confident about. Speak to your teachers for further advice.

You can also gather more information and advice at our Sixth Form Open Evenings, where Heads of Department and Sixth Form staff will be available to assist you.

Facilitating subjects

Certain university courses may require specific A Level subjects, but some are more commonly expected than others. These are often referred to as "*facilitating subjects*". While they may not be explicitly required, many successful applicants to top universities typically study at least two of these subjects. The facilitating subjects include:

- Mathematics and Further Mathematics
- English Literature
- Physics
- Biology
- Chemistry
- Geography
- History
- Modern and Classical Languages



Extended Project Qualification (EPQ)

The Extended Project Qualification (EPQ) allows students to pursue a largely self-driven project. You will choose a topic, conduct research, and decide on a finished product, all while developing essential academic skills.

The EPQ is worth half an A-Level and earns UCAS points. It is assessed based on Year 13 A Level standards. This qualification fosters creativity and curiosity and can be related to your intended university course or career field, giving you the chance to demonstrate your passion for a particular area.

Examples of previous EPQ are:

- Is Mathematical anxiety the most significant contributory factor to low academic performance in Mathematics?
- To what extent is forensic odontology necessary in post-mortem identification?
- To what extent have the legends and folktales of Vietnam influenced Vietnamese feminism?



A-Level vs. vocational qualifications

The key difference between A-Level and vocational qualifications lies in the assessment format. Traditional A-Level courses tend to have minimal non-examination assessments (NEA), commonly known as coursework. Most A-Level subjects culminate in three exams taken at the end of Year 13. In contrast, vocational qualifications, such as Cambridge Technical (CTEC), BTEC, or Alternative Academic Qualifications incorporate up to 50% NEA, alongside modular external exams in Year 12 and 13 with assessment periods in both January and May.

Vocational qualifications are graded differently, without the A*-E system. They still carry UCAS points and provide a pathway to higher education or apprenticeships. Below is a comparison of A-Level and vocational qualification grades:

A-Level grade	Vocational equivalent	UCAS points tariff
A*	Distinction*	56
A	Distinction	48
B	-	40
C	Merit	32
D	-	24
E	Pass	16

Please note: The Department for Education (DfE) has been reviewing vocational qualifications and newly approved Alternative Academic Qualifications (AAQs) are being introduced in phases from September 2025. We will be offering vocational courses as advertised and will provide further information on new courses at induction and enrolment.



The LPGS6 Way

Academic support

Students at LPGS6 are assigned a form tutor who is a specialist in one of their chosen subjects from the start of Year 12. This allows us to offer students weekly academic guidance as well as pre-assessment subject specific revision to support students to succeed.

Our Sixth Form assessment weeks, held each term, provide regular opportunities to track students' progress and offer additional targeted intervention where needed. Progress will be monitored against students' minimum target grades, and we hold regular Progress Review Meetings to discuss achievements, set new targets, and provide guidance. These meetings are conducted by form tutors, Heads of Year and the Head of Sixth Form.

We also have a dedicated Sixth Academic Mentor who can offer bespoke support sessions for students as part of our intervention programme.

Wellbeing support

LPGS6 offers a robust pastoral support system to ensure students receive the care and support they need during their time with us. We are committed to supporting both academic development and wellbeing. An experienced team of form tutors, Heads of Year and Associate Heads of Year play a key role in providing support, working closely with parents/carers and subject teachers to ensure students are happy and making good progress. We also have a dedicated Wellbeing Hub that offers extra support and guidance when needed and works closely with external agencies to offer wrap around care.

Enrichment

Every Wednesday afternoon, all Year 12 students participate in an enrichment activity. These activities are designed to broaden and enhance their Sixth Form experience as well as complement the skills students need in their chosen career or area of university study. While many students choose to take part in activities on school grounds, others opt to engage in work experience within the local community.

This year, we offer a wide range of exciting enrichment opportunities from debating and finance to first aid and a range of sporting activities.





Careers support

Our nationally-recognised Careers Academy is open daily for drop ins and appointments. Students can access resources such as university and college prospectuses, apprenticeship information and industry-related materials. We offer careers advice and personal support, along with regular opportunities to engage with employers and attend career-focused workshops.

Work experience

Year 12 students will complete a one-week work experience placement in the Summer Term. This provides a valuable opportunity to gain a first-hand insight into the world of work and understand how your school learning relates to employment. Work experience also helps clarify career goals and will be beneficial when applying for universities or future job opportunities, as it can be included in your UCAS statement.

Oxbridge and Medics Programme

Our Oxbridge and Medics Programme is specifically designed for students aiming for entry to Oxbridge (Oxford and Cambridge), as well as those pursuing careers in Medicine, Dentistry, or Veterinary Science (MDV). The programme offers tailored support from an Oxbridge expert, alongside guidance from university representatives, LPGS6 Alumni, and admissions staff in Oxbridge colleges.

This comprehensive support includes assistance with:

- Personal statement preparation
- Mock interview practice, including Multiple Mini Interviews (MMI)
- Entrance test preparation for the UCAT and BMAT
- Work experience opportunities
- Applications for summer schools
- Guidance on choosing and visiting universities or colleges

UCAS support and destinations

At LPGS6, we are committed to ensuring our students have the best possible opportunities for a fulfilling and successful career. In 2024, over 220 students from our Year 13 cohort secured places at universities. This success is the result of our strategic approach, which includes extensive research, information sessions, and personalised support throughout the university application process.

We offer a comprehensive guidance programme, starting in Year 12, for students applying to university. In Year 12, sessions are designed to help students research universities and their entry requirements in detail. Our dedicated Careers Team works closely to provide up-to-date information and support. Students will:

- Complete a research project as part of the pastoral curriculum to ensure thorough preparation for applications, including work experience.
- Access one-to-one support from a Personal Statement Advisor
- Attend an evening event covering topics such as Student Finance, gap year opportunities, and apprenticeships
- Participate in a PSHCE programme that addresses budgeting, living independently, and other key university preparation topics
- Receive personalised guidance from their form tutor, UCAS Advisor, and Head of Year to support their UCAS application
- Have opportunities to visit university open days and attend career fairs, including a Year 12 visit to the UCAS Exhibition in the Spring Term.
- Receive advice from former LPGS students currently attending leading universities or working in various industries.





Parents' meetings/evenings

At the beginning of the Autumn term, Year 12 parents/carers are invited to attend our Parents' Welcome Evening. This event provides an opportunity to learn more about how the Sixth Form operates and to answer any questions you may have. It is also a chance to meet your child's form tutor and connect with other parents.

In addition, Year 12 students will have one formal Parents' Meeting during their first year.

Year 13 students will have one formal parents' meetings to review and discuss their academic progress, however there is an option for targeted meetings during this year where needed.

Sixth Form Bursary

The 16-19 Bursary Fund provides financial support to help students overcome specific financial barriers to participation they face so they can remain in post-16 education. The bursary can help students purchase items such as:

- Books, resources or other equipment used for the individual programme of study
- Field trips, educational visits or specific enrichment activities relating to the programme of study
- Stationery
- Clothing or footwear in line with the Sixth Form dress code
- Electronic devices required for study
- Food on days you are at school
- UCAS or employment applications
- Essential travel (where the use of Oyster card is not accepted)
- Costs of industry placements, university interviews and open days

Students can, once their bursary application is approved, request that the school purchase items for them, request reimbursement for items they purchased (with receipts uploaded) or a combination of both.

The dates for submission of applications and requests will be made available to the students at the start of the year. Please note that to be eligible for the bursary, students must be punctual to lessons and have high attendance with no unauthorised absences. You must also meet the expectations of the LPGS school community.

Student leadership opportunities

At LPGS6, we are dedicated to nurturing leadership skills in all of our students. Our Sixth Form motto, *"Today's Learners, Tomorrow's Leaders"*, reflects our commitment to fostering the qualities that will enable our students to lead in the future. Students have opportunities to get involved with fundraising, student voice, running clubs and enrichment activities and supporting at events. Year 12 students can apply to become prefects in the Autumn Term. Through our prefect system, students are given the chance to develop their leadership abilities across a range of areas. In Year 13, our Senior Prefect Team plays a pivotal role in student voice both in Sixth Form and across the school.

Expectations

We strive at LPGS6 to support our students to achieve strong examination results which enable them to secure their chosen destinations.

To ensure students reach their full potential, it is essential that they meet certain expectations. The school expects students to:

- Attend school regularly and arrive on time for both registration and lessons
- Plan their study schedules carefully to maximise learning and ensure that assigned work is completed thoroughly and submitted on time
- Go beyond the assigned work to deepen their understanding of the subjects they are studying
- Work quietly and respectfully in all designated Sixth Form study areas
- Take responsibility for their own learning and use independent study time effectively

Students are expected to dedicate a minimum of six hours of work per subject, per fortnight, in addition to their scheduled lessons.



Dress code

LPGS6 students are role models for our school community. As such, they are expected to dress smartly. All LPGS6 Students are issued with an ID pass and a lanyard, which should be worn and visible at all times whilst in school for security reasons.

Students should dress as if they are attending a formal job interview.

LPGS SIXTH FORM DRESS CODE CONSISTENCY

NB. Our dress code is gender-neutral.



KEY PRINCIPLE: Would you wear it to a job interview?

- ✗ Jeans /cargo trousers
- ✗ Leggings
- ✗ Denim material
- ✗ Leather trousers
- ✗ Hoodies
- ✗ T-shirts
- ✗ Large logos
- ✗ Hats
- ✗ Sport or Leisurewear
- ✗ Trainers/Sports shoes (e.g. Converse or Vans,) Uggs, high heels, flip flops, sliders.

Fashions change – the above list is not exhaustive. More detail can be found on our website.



- ✓ HAIR colour is natural
- ✓ 1 facial piercing only
- ✓ Tattoos are covered up

- ✓ Conventional SUITS (tie is optional)
- ✓ Tailored BLAZERS/JACKETS (choice of colour)
 - All students are required to wear a formal blazer/jacket at **all times** on the school site
- ✓ COATS (hoods down) can be worn in corridors/canteens - not in classrooms or assembly

- ✓ Conventional SHIRTS or BLOUSES or SMART TOPS
 - Shoulders, midriff and cleavage are covered
- ✓ LANYARDS must be worn and visible at all times.

- ✓ Tailored trousers, skirts, dresses, shorts.
 - No higher than 3" above knee

- ✓ Plain leather shoes that can be polished

WHY?

Sixth form students are **role-models** and leaders in our community. The **flexibility** offered (in dress code and mobile phone expectations) must be handled **maturely** and responsibly. Working environments and expectations are ever changing but nevertheless, we have set them at our school with the above parameters. Thank you for your **respect** and leadership.

Coats are not to be worn in classrooms or assemblies.

Students may bring in an appropriate change of clothes – to be worn only in the relevant lesson – for certain subjects, e.g. PE, Drama, Art.

Due to ever-changing fashions, the list above is not exhaustive. We do ask that parents and carers support students in using their judgement for some specific garments. We reserve the right to send a student home to change should we judge their clothing to be in breach of the dress code. Time spent this way will be made up by the student in a senior detention.



How to Apply

Applicants are requested to complete the [online application form](#) on Applicaa by Friday 7 March 2025. The application can be found within the 'Courses 2025-26 & Application Form' page (under the 'Sixth Form' heading) on the LPGS School website: www.lpgs.bromley.sch.uk

We will contact applicants regarding their application by the end of April.

Offers of a place will be conditional on meeting the minimum academic entry requirements. Applicants will be informed of both the conditional offer and subsequent enrolment process by email.

Further details on the Admissions process can be found in our Admissions Policy. The policy is also available on our website.



LPGS6 Subjects

A Levels

Art & Design/Fine Art/Textiles	14
Biology	15
Business Studies	16
Chemistry	17
Computer Science	18
Dance	19
Drama & Theatre	20
Economics	21
English Language & Literature	22
English Literature	23
French	24
Further Mathematics	25
Geography	26
German	27
History	28
Law	29
Mathematics	30
Music	31
PE	32
Photography	33
Physics	34
Politics	35
Psychology	36
Religious Studies	37
Sociology	38
Spanish	39

Vocationals/AAQ

Applied Human Biology	40
Applied Science	41
Business	42
Creative Digital Media Production	43
Health & Social Care	44

Please visit our website [HERE](#) or click on the subject name on each course leaflet to find more information about our courses.



A-Level **ART & DESIGN/FINE ART/TEXTILES**

Examination board: Edexcel/Pearson

Entry qualification: Grade 4 or above in GCSE English Language and Grade 5 or above in GCSE Art & Design

Course description

We offer the unendorsed Art, Craft and Design A-Level, 2 Year course, which includes 2D and 3D work in drawing, painting, mixed media and print making and leads to the full A-Level qualification.

Year 12: You study units of practical coursework. The first unit is teacher-led and introduces you to different skills, materials and processes which we have at LPGS. The second unit of coursework aims to build on your developing skills but the work is much more independent and self-directed, aiding you to build and develop your own portfolio of work.

Year 13: You continue the second unit of practical coursework started in Year 12, during the Autumn term. After Christmas, you begin work on the externally set assignment. You have approx. 14 weeks to research and prepare work for a final three-day examination in which you make your final outcome in response to a set brief.

Skills required

A strong interest in the visual world, in drawing, painting, sculpture and in using and manipulating different materials, processes and techniques. You will need a willingness to research and develop ideas through observational drawing and have the ability to work to deadlines, requiring a high level of motivation. You will also be required to produce in-depth written analysis and research into the work of artists and designers.

Method of assessment

Coursework is 60% and the exam is 40% of the final marks.

All work is marked internally then standardised by all A-Level Art staff and finally moderated by the exam board.

Progression

Students progress to higher creative courses at foundation level and then degree level. Students also move into a number of creative careers as an artist, designer, teacher, animator, illustrator, fashion designer, textiles designer, film and tv production work etc

A-Level BIOLOGY

Examination board: Edexcel/Pearson

Entry qualification: Grade 4 or above in GCSE English Language, Grade 5 or above in GCSE Maths and Grade 6-6 or above in GCSE Combined Science (or Grade 6 or above in GCSE Biology)

Course description

'A modern, relevant and exciting course that engages students, takes account of the many recent advances in biology and makes use of the most appropriate teaching approaches and technologies to enable students to learn'.

Michael Reiss (Director of the Salters-Nuffield Advanced Biology Project)

Skills required

- Ability to learn and retain factual information.
- Ability to think clearly and interpret information.
- Ability to use initiative to research information independently.
- Ability to manipulate practical equipment and follow experimental procedures.
- Ability to design and carry out investigations.

Method of assessment

Paper 1: The Natural Environment and Species Survival (2 hours) – 33.33% of total marks.

Paper 2: Energy, Exercise and Co-ordination (2 hours) – 33.33% of total marks.

Paper 3: General and Practical Applications in Biology (2 hours) – 33.33% of total marks.

Practical skills will be assessed throughout the two years.

Progression

The study of Biology and other A-Level Sciences can lead to a variety of careers, not necessarily involving further study of science. Biology would be needed for further study or careers in the fields of Zoology, Botany, Veterinary work, Physiotherapy, Nursing, Environmental Science, Genetics and Medicine.

A-Level BUSINESS STUDIES

Examination board: OCR

Entry qualification: Grade 5 or above in GCSE English Language and Grade 5 or above in GCSE Maths

Course description

Students are introduced to business through marketing and people, and managing business activities in Year 12. Throughout the course, students will develop knowledge of core business concepts and apply them to business contexts in order to develop a broader understanding of how businesses work. In Year 13, students are introduced to business decisions, strategy, and global business, requiring them to take a more strategic view of business opportunities and issues.

Skills required

A commitment to hard work, the ability to undertake independent research, numeracy skills, critical, evaluative and analytical skills.

Method of assessment

This is assessed through 100% external examinations at the end of the two-year course. The Business A-Level qualification consists of three external papers as set out below:

Paper 1 – 35%

Paper 2 – 35%

Paper 3 – 30%

Progression

After this qualification, you can progress directly to employment; however, it is likely that you will do so via higher study. Areas of employment include junior business roles in marketing, administration, finance, events management, HR, marketing and other related areas in the business sector, including higher apprenticeships.

A-Level CHEMISTRY

Examination board: AQA

Entry qualification: Grade 4 or above in GCSE English language, Grade 6 or above in GCSE Maths and Grade 6-6 or above in GCSE Combined Science (or Grade 6 or above in GCSE Chemistry)

Course description

The course is designed to bring Chemistry to life and provides a stimulating and worthwhile range of experiences which will engage your interest in the study of Chemistry. We will encourage you to develop essential knowledge and understanding of different areas of the subject and how they relate to each other, developing and demonstrating a deep appreciation of the skills, knowledge and understanding of scientific methods, understanding how society makes decisions about scientific issues and how the sciences contribute to the success of the economy and society.

Chemistry is a practical subject and the development of practical skills is fundamental to understanding the nature of Chemistry. Teaching of practical skills is integrated with the theoretical topics and they are assessed both through written papers and the Practical Endorsement.

Skills required

The main activities in which the students are engaged are:

- Solving problems using concepts.
- Solving problems using mathematical techniques.
- Using practical techniques to investigate the behaviour of materials.
- Looking for and using patterns in the behaviour of substances.
- Studying the applications of chemistry in selected fields, together with their social and economic aspects.

Method of assessment

The A-Level is assessed through three written examinations at the end of the two-year course. The examination papers will include multiple choice questions, short answer question styles (structured questions, problem solving, calculations, practical techniques and data analysis) and extended response questions. Stretch and challenge questions will support the awarding of the A* grade at A-Level. All three written examinations contain some synoptic assessment.

Progression

Chemistry is an essential subject for many degree courses including Medicine, Dentistry, Veterinary Science, Pharmacy, Nutrition, Food Science, Metallurgy, Materials Science, Agriculture and Chemical Engineering. Study of Chemistry at A-Level can also lead to a wide variety of degree courses and careers, not necessarily involving further study of science.

A-Level COMPUTER SCIENCE

Examination board: OCR

Entry qualification: Grade 5 or above in GCSE English Language, Grade 6 or above in GCSE Maths and Grade 6 or above in GCSE Computer Science or ICT (if taken)

Course description

Computer Science A-Level is a cutting edge, fast paced, stimulating subject that incorporates many disciplines, including mathematics, programming and linguistics. It will sharpen your problem-solving skills and creativity, as well as deepening your understanding of how technology works; far beyond the average user. Studying Computer Science at LPGS6 will put you in a great position to enter an increasingly technological society and give you the skills to excel in an industry that is growing faster than most others. Whether you want to be a cyber security expert, analyst, programmer, web or app designer, or just want to work in the exciting and well-paid tech-industry; having a greater understanding of the technology around us will make you stand out from the crowd. Lessons at LPGS6 will be engaging and often practical. You'll be encouraged to work together to try to find solutions to issues, and students often build strong bonds as a class. You'll be taught about how computers and networks work as well as learning programming.

Skills required

Computer Science is an ideal subject for inquisitive students with a strong interest in technology in particular. You will need to be able to work independently as well as part of a group and have the patience to solve complex logical problems.

Method of assessment

Paper 1: Computer Systems (exam 2h 30m) – 40% of total marks.

Paper 2: Algorithms and Programming (exam 2h 30m) – 40% of total marks.

Coursework: A programming project where you pick an area of interest or a problem and create a program in a language of your choice (coursework) – 20% of total marks.

Progression

Although Computer Science is an ideal introduction to those wishing to study the subject at degree level, the course allows candidates to develop transferable skills such as problem solving, creativity, innovation, analysis and logic as well as programming. These skills drive innovation across areas including the sciences, engineering, business, entertainment and education. No matter what field you want to enter, having a background in Computer Science will give you that competitive edge and the potential to make a positive difference within your chosen career.

A-Level DANCE

Examination board: AQA

Entry qualification: Grade 6 or above in GCSE English Language and Grade 6 or above in GCSE Dance (if taken) – *or an audition for those with no GCSE Dance but dance experience*

Course description

A-Level Dance is a dynamic qualification which encourages students to develop their creative and intellectual capacity, alongside transferable skills such as; teamwork, communication and problem solving. This specification reflects both historical and current dance practices and inspires a lifelong passion and appreciation for dance. A wide range of contemporary dance techniques will be studied, including Graham, Cunningham and Release. Choreography examination tasks are set to encourage student exploration of a vast array of topics and promote the skills of research and development in order to create imaginative and engaging works. Topics covered include the historical study of Rambert, the iconic work Rooster by Christopher Bruce, the Independent Contemporary British Dance Scene and work by Matthew Bourne and Akram Khan, as well as the opportunity to perform Ballet or Jazz.

Skills required

The course demands a high level of commitment, concentration and sensitivity. You need to be able to evaluate and appreciate professional work.

Method of assessment

Component 1: 50% practical (quartet performance, choreography performance & solo performance).

Component 2: 50% written (2 hours 30 minutes: Rambert Dance Company and two set works).

Progression

Many of our students are successful graduates on Dance degree courses at universities such as Trinity Laban. As well as choreography and teaching, this course could lead to such diverse careers as physiotherapy, nursing and journalism.

A-Level DRAMA & THEATRE

Examination board: Edexcel/Pearson

Entry qualification: Grade 5 or above in GCSE English Language and Grade 5 or above in GCSE Drama (if taken)

Course description

The course is both a practical and theoretical study of theatre. There are 4 main areas of study:

- Preparing developing and performing your own devised and scripted work.
- Studying and exploring set texts.
- Exploring the work of important theatre practitioners.
- Responding to live theatre productions you have seen during the course.

Skills required

The course demands a high level of commitment and sensitivity. You need to be able to work collaboratively and practically with others, to be creative, and to be enthusiastic about performance. You need to be able to write analytically and evaluatively and to be willing to participate in theatre trips, often in evenings.

Method of assessment

Component 1: Devising (40% of total marks). Devise an original piece of performance and produce a portfolio. You can participate as either a performer or designer. Internally assessed and moderated by the exam board.

Component 2: Text in Performance (20% of total marks). Performance of a group piece and a monologue from different texts. Externally examined.

Component 3: Written Paper (40% of total marks). One question on live theatre. Extended responses on two set texts from the perspective of a performer and a designer.

Progression

Drama and Theatre gives flexibility of choice for further study. Students progress to study Drama at university and attend Drama School, but also to study subjects such as Law, Film, Psychology, French, English and even Medicine.

A-Level ECONOMICS

Examination board: Edexcel/Pearson

Entry qualification: Grade 5 or above in GCSE English Language and Grade 6 or above in GCSE Maths

Course description

A-Level Economics is a very popular subject because it provides a pathway to an incredibly diverse range of careers. It is also a great complementary subject to other popular subjects such as Maths, Geography, History and Politics.

The world is still dealing with the devastating economic effects of Covid-19 and now we are seeing the true economic impacts of Brexit. There is a huge shortage in the key labour market of truck drivers, a rise in the wholesale prices of gas, unprecedented spending and borrowing by the UK government, increasing national debt, widening economic inequality and leading to rising inflation.

Skills required

A commitment to hard work, the ability to undertake independent research, numeracy, critical, evaluative and analytical skills.

Students will need to apply their knowledge and understanding to both familiar and unfamiliar contexts in the assessments and demonstrate an awareness of current economic events and policies.

Method of assessment

This is assessed through 100% external examinations at the end of the two-year course. Your A-Level Economics qualification will consist of three external papers as set out below:

Paper 1: 35% of total marks.

Paper 2: 35% of total marks.

Paper 3: 30% of total marks.

Progression

Economics is highly valued by universities and employers from the private and public sectors. Students can go on to work as economists, policy makers, analysts, bankers, journalists, teachers, writers, politicians as well as many other potential careers

A-Level ENGLISH LANGUAGE & LITERATURE

Examination board: OCR

Entry qualification: Grade 6 or above in GCSE English Language and Grade 6 or above in GCSE English Literature

Course description

This course places the emphasis on language and literature being interconnected and mutually supportive disciplines. It allows students to develop as independent, confident, reflective readers and writers. Students will explore the relationship of language and literature through a wide range of reading opportunities of both literary and non-literary texts. There are opportunities for students to craft their own writing for different purposes and audiences. Importance is placed on literary and linguistic frameworks of analysis and terminology to deconstruct texts for exploration of how they create their effects on the audience. An exciting element of the course is that it allows students the opportunity to explore texts from a wide range of cultures such as Chinua Achebe's classic tragedy *'Things Fall Apart'*. Additionally, the course has a stronger focus on contemporary writing than the literature course allowing students to study texts ranging from Gillard's iconic speech to the Australian parliament to graphic novels and music reviews.

Skills required

This course requires students to be keen readers of novels, plays and poetry. They need to be interested in analysing language and style across a range of texts. In comparison with A-Level English Literature, this course requires students to be interested in developing their own writing as well as responding to the writing of other authors.

Method of assessment

Students are studying towards three examinations and two 'Independent Study' pieces of coursework worth a total of 20%:

Component 1: Non-Fiction and Spoken Texts – 16 % of total marks.

Component 2: The Language of Poetry and Plays – 32 % of total marks.

Component 3: 'Reading as Writer' and 'Writer as Reader' – 32% of total marks.

Component 4: Independent Study – 20% of total marks.

Progression

This course will provide students with the necessary skills to continue study in this subject at a more advanced level. It is an interdisciplinary subject and therefore supports applications in any Arts/Humanities/Social Science based degree courses. Equally it can work as an effective companion for the scientific disciplines at A-Level because it develops students' critical thinking, a skill in many subject areas.

Ms Walker - Head of English - jw@lpgs.bromley.sch.uk

A Level ENGLISH LITERATURE

Examination board: Edexcel/Pearson

Entry qualification: Grade 7 or above in GCSE English Language and Grade 7 or above in GCSE English Literature

Course description

English Literature remains overwhelmingly popular among the wider offer of English Syllabi. It is a well-established course, recognised by Higher Education Institutions. The subject is valued for its interdisciplinary content where students are invited to discuss and research the social, historical and cultural contexts of their texts.

Texts may include Atwood's *'The Handmaid's Tale'* and Shelley's *'Frankenstein'*, where students are invited to compare the texts considering their shared Science Fiction genre. Aspects of tragedy are explored with Shakespeare's *'Othello'*/*'Hamlet'* and Tennessee Williams' *'A Streetcar Named Desire'*. In keeping with the Prose and Drama components, students are invited to explore poetry from different times by studying *'Poems of the Decade'* (post-2000) and Donne's *'Metaphysical Poetry'* (pre-1900). The coursework component, where students compare two texts of their choice, begins during the summer of Year 12.

Skills required

Typically, an A-Level student must undertake independent reading and value the importance of wider reading. Students must be willing to read around texts they are studying in class and know that a lot of reading is required outside of the classroom. Students should enjoy reading and discussing what they have read in an open and inquiring way, bearing in mind the historical, cultural and social contexts of texts. They should also feel reasonably confident about expressing their ideas in writing.

Method of assessment

All students will sit an A-Level examination for this subject at the end of Year 13, marking the end of the course. Students will study a total of 4 components:

Component 1: Drama – 30 % of total marks.

Component 2: Prose – 20 % of total marks.

Component 3: Poetry – 30% of total marks.

Component 4: Coursework – 20% of total marks.

Progression

English Literature A-Level is the traditional foundation for any university course involving literary studies. As success depends on the ability to argue an opinion convincingly, supporting your ideas with textual evidence, English Literature A-Level is also a good foundation for other Arts and Humanities degrees or careers. Equally it can work as an effective companion for the scientific disciplines at A-Level because it develops strong skills of critical thinking, applicable for any subject.

Entry qualification: Grade 5 or above in GCSE English Language and Grade 6 or above in GCSE French

Course description

During the course of your A-Level studies in French you will:

- Develop an interest in, and enthusiasm for, language learning.
- Develop understanding of the language in a variety of contexts and genres.
- Communicate confidently, clearly and effectively in the language for a range of purposes.
- Develop awareness and understanding of the contemporary society, cultural background and heritage of countries or communities where the language is spoken.
- Acquire knowledge, skills and understanding for practical use, further study and/or employment.
- Take advantage of all opportunities to take part in cultural events and foreign trips.

Skills required

Knowledge, understanding and skills are closely linked in this course. You will continue to develop your ability to:

- Understand and respond in speech and writing to a variety of authentic spoken and written sources.
- Apply grammar and syntax accurately.
- Demonstrate knowledge and understanding of aspects of French-speaking society.
- Demonstrate flexibility when communicating both in speech and in writing.
- Manipulate the language accurately to organise facts and ideas, present explanations, opinions, and information.
- Analyse, hypothesise, evaluate, argue a case, justify, persuade, retort, develop arguments, and present viewpoints using the appropriate register.

Method of assessment

Component 1: Listening, reading and translation – 40 % of total marks.

Component 2: Written response to works (literary texts and films) and translation – 30 % of total marks.

Component 3: Speaking (discussion on a theme and on independent research project) – 30% of total marks.

Progression

Universities and employers look favourably on applicants with a high level of foreign language ability and languages can complement any higher education courses.

A-Level FURTHER MATHEMATICS

Examination board: Edexcel/Pearson

Entry qualification: Grade 8 or above in GCSE Maths and a recommendation from your current Maths teacher

Course description

This course leads to two A-Levels. In Year 12, a student will complete a full A-Level in Mathematics and in Year 13, an A-Level in Further Mathematics. It is most suitable, though not exclusively, for students who are interested in pursuing Mathematics or a Mathematics-related degree at university. If you are considering this course you should consult your Mathematics teacher.

Skills required

A very good knowledge of all aspects of GCSE Mathematics and a genuine enjoyment of Mathematics and problem solving.

Method of assessment

A level Mathematics (examined in May/June of Year 12):

3 externally examined papers:

- Pure 1 – worth 100 marks.
- Pure 2 – worth 100 marks.
- Applied (Statistics & Mechanics) – worth 100 marks.

A level Further Mathematics (examined in May/June of Year 13)

4 externally examined papers:

- Core Pure 1 – worth 75 marks.
- Core Pure 2 – worth 75 marks.
- Option 1 – worth 75 marks.
- Option 2 – worth 75 marks.

Options: Further Statistics, Further Mechanics, Decision and Further Pure.

Progression

Success in Mathematics is an indication of the ability to think logically and to deal with abstract generalisations. Mathematics can complement almost any choice of subjects and is looked at favourably in applications for any Higher Education course. It is essential for the study of Mathematics, Engineering and Physics at degree level and recommended for Chemistry, Medicine, Economics, Architecture, Accountancy, Computing, Information Technology, Philosophy, Psychology and other social sciences. Further Mathematics is particularly desirable for Mathematics and Engineering courses as well as many other STEM subjects.

A-Level GEOGRAPHY

Examination board: Edexcel/Pearson

Entry qualification: Grade 5 or above in GCSE English Language, Grade 5 or above in GCSE Maths, Grade 5 or above in GCSE History or Geography and Grade 5-5 or above in GCSE Comb.Science (or any science)

Course description

Geography is the study of the natural and human world, exploring the dynamic interactions that shape our planet. This course provides a comprehensive understanding of diverse geographical themes, equipping students to analyse and respond to real-world issues. Topics include: tectonic processes and hazards, coastal landscapes and change, the water cycle and issues of global water insecurity, the carbon cycle and issues of global energy security, globalisation, regenerating places, superpowers, health, and human rights, and intervention

Fieldwork is integral to the course, offering hands-on experiences through day trips and residential. Recent residential have included destinations such as Dorset and Somerset. In Year 13, students undertake independent coursework tailored to their fieldwork experiences, allowing them to deepen their knowledge in specific areas of interest.

Skills required

Throughout the course, students will develop a wide range of key skills, including: data analysis and interpretation, research and extended writing, communication skills, teamwork, geographical fieldwork skills and ICT proficiency. These skills prepare students for higher education and professional environments, emphasising critical thinking, problem-solving, and adaptability.

Method of assessment

Paper 1: Written examination (2h and 15min) - 30% of total marks.

Paper 2: Written examination (2h and 15min) - 30% of total marks.

Paper 3: Synoptic written examination (2h and 15min) - 20% of total marks.

Coursework: Independent investigation (3,000 to 4,000-word essay based on their own fieldwork experience) - 20% of total marks.

Progression

A-Level Geography is widely regarded as an academically rigorous and versatile subject, providing students with a strong foundation for further education and a wide array of career paths. Geography combines elements of the sciences, mathematics, sociology, politics, and economics, making it an ideal subject for students pursuing degrees in geography, environmental science, urban planning, international relations, geology, or economics.

A-Level GERMAN

Examination board: Edexcel/Pearson

Entry qualification: Grade 5 or above in GCSE English Language and Grade 6 or above in GCSE German

Course description

During the course of your A-Level studies in German you will:

- Develop an interest in, and enthusiasm for, language learning.
- Develop understanding of the language in a variety of contexts and genres.
- Communicate confidently, clearly and effectively in the language for a range of purposes.
- Develop awareness and understanding of the contemporary society, cultural background and heritage of countries or communities where the language is spoken.
- Acquire knowledge, skills and understanding for practical use, further study and/or employment.
- Take advantage of all opportunities to take part in cultural events and foreign trips.

Skills required

Knowledge, understanding and skills are closely linked in this course. You will continue to develop your ability to:

- Understand and respond in speech and writing to a variety of authentic spoken and written sources applying grammar and syntax accurately.
- Demonstrate knowledge and understanding of aspects of German-speaking society.
- Demonstrate flexibility when communicating both in speech and in writing.
- Manipulate the language accurately to organise facts and ideas, present explanations, opinions, and information.
- Analyse, hypothesise, evaluate, argue a case, justify, persuade, retort, develop arguments, and present viewpoints using the appropriate register.

Method of assessment

Component 1: Listening, reading and translation – 40 % of total marks.

Component 2: Written response to works (literary texts and films) and translation – 30 % of total marks.

Component 3: Speaking (discussion on a theme and on independent research project) – 30% of total marks.

Progression

Universities and employers look favourably on applicants with a high level of foreign language ability and languages can complement any higher education courses.

Mr Davis - Head of German - fd@lpgs.bromley.sch.uk

Entry qualification: Grade 5 or above in GCSE English Language and Grade 5 or above in GCSE History (or any Humanities subject)

Course description

The course consists of three externally examined papers and coursework. The course is linear and all assessment happens at the end of the A-Level in Year 13.

The following units and topics are studied:

- In search of the American Dream: the USA, c.1917–96.
- South Africa, 1948–94: from apartheid state to 'rainbow nation'.
- Protest, agitation and parliamentary reform in Britain, c.1780–1928.
- Interpretations of the Russian Revolution.

Skills required

A historian needs to enquire beyond the obvious and the superficial. You will need to think, to listen, to read and, above all, to write analytically. A willingness to interpret historical information, and the ability then to express your findings, whether in discussion, or in writing, are required. You should be able to analyse and to evaluate historical sources and interpretations.

Method of assessment

Paper 1: *Option 1F* – In search of the American Dream: the USA, c.1917–96 – 30% of total marks.

Paper 2: *Option 2F.2* – South Africa, 1948–94: from apartheid state to 'rainbow nation' – 20% of total marks.

Paper 3: *Option 36.1* – Protest, agitation and parliamentary reform in Britain, c.1780–1928 – 30% of total marks.

Coursework: Interpretations of the Russian Revolution (3,000 to 4,000-word essay on a chosen question) – 20% of total marks.

Progression

Success in History, at all levels, indicates an ability to present an argument (written or verbal) and to consider all the implications of complex issues. Such abilities are the foundation for any career which provides its own additional, specialist training. This explains why those with History qualifications are found not only in the more obvious areas of history teaching, archives and museum administration, but also, in greater numbers than ever, in law, computing, the financial services, advertising, marketing, publishing, politics and so on. Any History qualification enhances employability and makes you more interesting too!

A-Level LAW

Examination board: AQA

Entry qualification: Grade 5 or above in GCSE English Language

Course description

The law helps to define a society's values and also provides a means to solve problems and disputes without resort to violence. Knowledge of the law can give people more control over their lives and more confidence in their dealings with others. People should be aware of their rights under the law and, equally, of their legal duty to respect the rights of others. On the course you will study:

- The English legal system: the different types of law, people in the law, legal institutions and legal careers and how to defend a prosecution or how to resolve a civil dispute.
- Crime: fatal (murder and manslaughter) and non-fatal offences (common assault, actual bodily harm, wounding, grievous bodily harm), theft and robbery and defences that may be argued.
- Civil law: negligence, nuisance, occupiers' liability and contract law. You will learn about your rights as a consumer.

Skills required

A good standard of written English is required along with an ability to be organised and logical.

Method of assessment

This is assessed through 100% external examinations at the end of the two-year course. There are three two-hour written exam papers.

Progression

Studying Law at A-Level provides a sound qualification for any degree discipline and a good foundation for the study of law in Higher Education.

Career opportunities are very wide-ranging and would especially include careers in law, business, the Civil Service, the police force, banking, insurance or finance. Many of our students study law at university or start a legal apprenticeship.

A-Level MATHEMATICS

Examination board: Edexcel/Pearson

Entry qualification: Grade 4 or above in GCSE English Language, Grade 7 or above in GCSE Maths and a recommendation from your current Maths teacher

Course description

This course aims to develop the ability to apply mathematical skills and techniques in other subjects and to lay foundations for the further study of mathematics and other disciplines. Pure mathematics will extend your knowledge of algebra and trigonometry and introduce new ideas such as calculus. You will also study applications of mathematics in mechanics and statistics. Mechanics is the study of the motion of objects and the forces acting upon them. In Statistics you will learn how to analyse data and draw conclusions from it using probability and other concepts.

Skills required

A good knowledge of all aspects of GCSE mathematics and a genuine enjoyment of mathematics and problem-solving.

Method of assessment

A-Level Mathematics consists of three externally examined papers:

Paper 1: Pure Mathematics (2 hours) – 100 marks.

Paper 2: Pure Mathematics (2 hours) – 100 marks.

Paper 3a: Statistics (1 hour) – 50 marks.

Paper 3b: Mechanics (1 hour) – 50 marks.

Note: Papers 3a and 3b are sat in the same sitting.

Progression

Success in mathematics is an indication of the ability to think logically and to deal with abstract generalisations. Mathematics can complement almost any choice of subjects and is looked at favourably in applications for any Higher Education Course. A-Level Mathematics is essential for the study of engineering, physics and mathematics at degree level and is related to, or strongly recommended for, chemistry, medicine, economics, architecture, accountancy, teaching, computing, information technology, philosophy, psychology and other social sciences.

A-Level MUSIC

Examination board:AQA

Entry qualification: Grade 5 or above in GCSE English Language and Grade 6 or above in GCSE Music (if taken) – *or instrumental or vocal Grade 5/6 and Grade 5/6 theory or equivalent for those with no GCSE Music*

Course description

Music is available as a 3 component award (A-Level). The course develops all aspects of musicianship with a focus on performance, analysis, critical listening and composition. The listening paper includes the study Area of study 1: Western classical tradition 1650–1910 as well as our two centre-chosen areas of study (Area of study 4: Musical Theatre & Area of Study 7: Art Music since 1910).

Skills required

The ability to read notation is essential as well as a commitment to hard work and a busy rehearsal schedule. The ability to work independently (instrumental practice and research) and the potential to reach grade 7+ on instrument/voice by the end of the course are also required.

Involvement in Extra Curricular ensembles and concerts is mandatory

Method of assessment

Music A-Level is assessed through one exam and two coursework components as follows:

- **Exam** – Listening analysis exam (2hr 45 minutes) – 40% of total marks.
- **Solo performance recital** (10 minutes minimum) – 35% of total marks.
- **2 compositions** (one free and one to a brief) (4 minutes and 30 seconds minimum) – 25% of total marks.

Progression

Music has been described as an intelligent response to feeling and sound. As the subject requires confidence, sensitivity, creativity, imagination, analytical skills and the ability to work well individually and collectively, the course opens up many different pathways – at degree level and beyond.

A-Level PHOTOGRAPHY

Examination board: Edexcel/Pearson

Entry qualification: Grade 4 or above in GCSE English Language and Grade 6 or above in GCSE Art & Design/Photography/Design Technology

Course description

We offer the endorsed Photography A-Level, 2-year course, which includes both digital and traditional analogue, darkroom photography and leads to the full A-Level qualification.

Year 12: You study units of practical coursework. The first unit is teacher-led and introduces you to different skills, materials and processes which we have at LPGS. The second unit of coursework aims to build on your developing skills, but the work is much more independent and self-directed, aiding you to build and develop your own portfolio of work.

Year 13: You continue the second unit of practical coursework, started in Year 12, during the Autumn term. After Christmas you begin work on the externally set assignment. You have approx. 14 weeks to research and prepare work for a final three-day examination in which you make your final outcome in response to a set brief.

Skills required

A strong interest in the visual world, taking, correcting and manipulating photographic images is essential. You will need a willingness to research and develop ideas through making photographic records and have the ability to work to deadlines requiring a high level of motivation. You will also be required to produce in-depth written analysis and research into the work of different Photographers and Artists.

Method of assessment

Coursework is 60% and the exam is 40% of the final marks

All work is marked internally then standardised by all A-Level Art staff and finally moderated by the exam board.

Progression

Students progress to higher creative courses at foundation level and then degree level. Students also move into a number of creative careers as an artist, photographer, designer, teacher, animator, illustrator, fashion designer, textiles designer or in film and tv production work etc.

A-Level PHYSICAL EDUCATION

Examination board: AQA

Entry qualification: Grade 5 or above in English Language, Grade 6 or above in GCSE PE and Grade 5 or above in a GCSE science subject

Course description

A-Level Physical Education (PE) is a course for students who have a genuine interest in understanding the mechanics and science behind elite sports performance. This course builds on the students' experience at GCSE, enhancing their knowledge and increasing their understanding of the factors that affect performance and participation in sport.

Topics covered through theory and practical lessons include:

Applied anatomy and physiology, skill acquisition, sport and society, exercise physiology, biomechanical movement, sports psychology and the role of technology in physical activity and sport.

Skills required

- A good standard of written English will enable students to meet the demands of the exams.
- A strong ability in science, particularly Biology.
- Current participation in competitive sport either as a player or coach. You will be required to provide evidence that you are playing/coaching regularly in your chosen activity at competition level.

Method of assessment

The course is aimed at those looking to study for the full 2-years and complete the full A-Level course:

- 70% of the overall grade is based on theoretical content, assessed via two examinations in June of the second year of study.
- 30% of the overall grade is based on sports performance and analysis.

Progression

The educational progression and career opportunities from A-Level PE are wide-ranging, such as Physiotherapy, Professional Sports career, Leisure and Tourism, Sports Development, Sports Psychology, Osteopathy, Chiropractor, Sports Journalist, Sports Manager, Sports Administration, and Teaching.

Entry qualification: Grade 4 or above in GCSE English language, Grade 7 or above in GCSE Maths and Grade 6-6 or above in GCSE Combined Science (or Grade 6 or above in GCSE Physics)

Course description

This course is designed to lead on from GCSE Combined Science or GCSE Physics and aims to embed fundamental physical concepts and develop those areas of Physics which are most relevant to the modern world. Teaching is concept-based with an emphasis placed on the solving of problems and the application of knowledge in new and challenging situations. In Year 12, we teach Mechanics, Materials, Electric Circuit, Waves and the Particle Nature of Light. In Year 13, we cover topics such as Particle Physics, Astrophysics, Thermodynamics, Oscillations, and Electromagnetic Machines. We complete 16 core practicals over the two-year course.

Skills required

Students need to be curious about the world around them. They will need a strong mathematical ability, be able to think independently and to be able to produce logical written arguments and explanations in clear English.

Method of assessment

The examinations at the end of Year 13 will cover topics from all units and these will provide a final grade for the A-Level. There are two 105 minute papers worth 90 marks each, and one paper of 150 minutes worth 120 marks. Students will also gain a practical accreditation when they complete the core practicals.

Progression

Physics would be required for courses and careers in Physics, Astrophysics, Medical Physics and Engineering. It is also a facilitating subject for many other degrees and careers such as Law, Economics, Medicine and Journalism.

A-Level POLITICS

Examination board: Edexcel/Pearson

Entry qualification: Grade 6 or above in GCSE English Language and Grade 6 or above in any Humanities subject

Course description

The A-Level Politics course at LPGS6 offers students a comprehensive understanding of political systems, ideologies, and issues in the UK and beyond. It is designed for students eager to explore current affairs and develop informed perspectives.

The course is divided into three main components:

- UK Politics and Political Ideas covers the fundamental principles of the UK's democratic system, including its electoral systems, political parties, and pressure groups. Students also explore the conservative, liberal, and socialist ideologies.
- UK Government focuses on the structure and workings of the UK government. This unit examines the constitution, the role of Parliament, and the judiciary. Students study the power dynamics between various branches of government. At LPGS6 we also study feminism as an optional extra ideology.
- Global Politics gives students a fundamental understanding of international relations, covering key topics like globalisation, international organisations, and global power structures. Students explore issues of security, human rights, and the impact of economic and environmental challenges on international cooperation and conflict.

Skills required

Students should be passionate about understanding how the world works and be prepared to question and think critically about it.

Method of assessment

There are three papers in A-Level Politics, each of which carries a third of the overall mark. The questions are a variety of essay questions and source-based questions.

Paper 1 – 33.3%

Paper 2 – 33.3%

Paper 3 – 33.3%

Progression

Politics is highly regarded as an academic subject by university admissions tutors. Using similar skills of evaluation and analysis as the other Humanities subjects, it fits well into the A-Level profile. Success in Politics reflects the ability to debate, conclude arguments, interpret information and write fluently and articulately, all of which are skills important to universities regardless of the degree course you may apply for. Several students continue to study Politics every year in related courses at university.

A-Level PSYCHOLOGY

Examination board: AQA

Entry qualification: Grade 6 or above in GCSE English Language, Grade 6 or above in GCSE Maths and Grade 5 or above in any GCSE Science subject

Course description

Psychology is a subject which provides a link between the social and natural sciences by studying aspects of the human mind and behaviour using scientific principles. The Year 12 syllabus provides a broad-based introduction to many of the fascinating topics in Psychology. In Year 13, students will refine and further develop their understanding to a more advanced level, focusing on specific topics of interest to researchers today. The course is examined at the end of Year 13 via 3 A-Level exam papers. The AQA specification provides a strong foundation for students wishing to study Psychology at university. For those who decide not to take their studies of Psychology further, the course provides a fantastic opportunity to develop their numeracy and literacy skills on an academically rigorous and interesting course.

Skills required

A good standard of written English plus the ability to discuss and analyse logically is essential. This specification contains an emphasis on scientific concepts and skills and some elements of mathematics; therefore, you must have good grades in these subjects.

Method of assessment

This is assessed through 100% external examinations at the end of the two-year course. The Psychology A-Level qualification consists of three external papers as set out below:

Paper 1 – 33.3%

Paper 2 – 33.3%

Paper 3 – 33.3%

Progression

Psychology A-Level facilitates entry on to a wide range of science, social science and humanities courses in further and higher education. Specialisation in psychology can lead to a range of careers, including academic or consumer research, clinical or educational psychology, counselling, occupational or forensic psychology. This A-Level is highly regarded by a range of employers due to its ability to develop numeracy and literacy skills.

A-Level RELIGIOUS STUDIES

Examination board: AQA

Entry qualification: Grade 6 or above in GCSE English Language and Grade 5 or above in GCSE RE (or any Humanities subject)

Course description

All learners will study two components on this two-year course:

Component 1:

Philosophy of Religion: Students will study philosophical issues and questions raised by religion and belief. They will also explore philosophical language and thought, and the works of key thinkers, as illustrated in issues or debates in the philosophy of religion.

Religion and Ethics: Topics include normative ethical theories and key ethical concepts, as well as developments in the way these ideas are applied to significant issues in religion and belief. These will be illustrated in issues or debates in religion and ethics, and also by the application of ethical theory to current moral issues.

Component 2:

Religion and Dialogue: This unit provides an opportunity for the systematic study of one religious tradition (Christianity). This will include exploration of religious beliefs, values and teachings, sources of wisdom and authority. It will also include religious practices and the different ways in which these are expressed in the lives of individual, communities and societies. Dialogue between Christianity, philosophy and ethics will also form a key component of this unit of work.

Skills required

Critical thinking, deduction, inference and evaluation are key skills needed for success in Religious Studies. Sound, effective and confident written and verbal communication are also essential.

Method of assessment

Two 3-hour written papers at the end of Year 13.
Each examination will assess one of the two components.
Each paper accounts for 50% of the final A-Level.

Progression

On completion of our Religious Studies course, many students will have acquired a diverse range of skills, including critical thinking, enhanced synthesis and evaluation, to name a few. Many students progress to university for further study in the subject or others such as politics, law and history. Career opportunities are vast and varied. Many graduates use their Religious Studies qualification to pursue careers in a variety of areas including education, journalism, law, social work and medicine.

Mrs Heaton - Head of Religious Studies - sh@lpgs.bromley.sch.uk

A-Level SOCIOLOGY

Examination board: AQA

Entry qualification: Grade 5 or above in GCSE English Language and Grade 5 or above in GCSE History (or any Humanities subject)

Course description

This course provides a lively and interesting introduction to Sociology and the study of human social behaviour. Sociology provides a scientific study of society, which helps us to understand various social systems. Although we study specific topics in depth, students are encouraged to develop their own awareness through engagement with the contemporary social world.

Skills required

A good standard of written English and an interest in current affairs are essential. Students should be able to discuss and analyse social issues and problems.

Method of assessment

This is assessed through 100% external examinations at the end of the two-year course with structured and essay style questions.

Progression

Sociology involves a rigorous study of a variety of sociological perspectives and develops the ability to evaluate critically. The ability to evaluate (create an argument) is a critical skill. Sociology is accepted as an academic A-Level and is a useful background for those wishing to study social sciences, law and the humanities in further and higher education. You could progress into social/probation work, careers in the health services, advertising, marketing and human resources, the media, the police and the legal profession.

A-Level SPANISH

Examination board: AQA

Entry qualification: Grade 5 or above in GCSE English Language and Grade 6 or above in GCSE Spanish

Course description

During the course of your A-Level studies in Spanish you will:

- Develop an interest in, and enthusiasm for, language learning.
- Develop understanding of the language in a variety of contexts and genres.
- Communicate confidently, clearly and effectively in the language for a range of purposes.
- Develop awareness and understanding of the contemporary society, cultural background and heritage of countries or communities where the language is spoken.
- Acquire knowledge, skills and understanding for practical use, further study and/or employment.
- Take advantage of all opportunities to take part in cultural events and foreign trips.

Skills required

Knowledge, understanding and skills are closely linked in this course. You will continue to develop your ability to:

- Understand and respond in speech and writing to a variety of authentic spoken and written sources applying grammar and syntax accurately.
- Demonstrate knowledge and understanding of aspects of Spanish-speaking society.
- Demonstrate flexibility when communicating both in speech and in writing.
- Manipulate the language accurately to organise facts and ideas, present explanations, opinions, and information.
- Analyse, hypothesise, evaluate, argue a case, justify, persuade, retort, develop arguments, and present viewpoints using the appropriate register.

Method of assessment

Component 1: Listening, reading and translation – 40 % of total marks.

Component 2: Written response to works (literary texts and films) and translation – 30 % of total marks.

Component 3: Speaking (discussion on a theme and on independent research project) – 30% of total marks.

Progression

Universities and employers look favourably on applicants with a high level of foreign language ability and languages can complement any higher education courses.

Ms Mahiques Navarro - Head of Spanish - [mma@lpgs.bromley.sch.uk](mailto:mmma@lpgs.bromley.sch.uk)

Vocational/AAQ HUMAN BIOLOGY

Examination board: OCR

Entry qualification: Grade 4 or above in GCSE English Language, Grade 4 or above in GCSE Maths and Grade 4-4 or above in Combined Science (or 4-4-4 in Triple Science)

Course description

The Level 3 Alternative Academic Qualification (AAQ) in Human Biology is a pathway to a career in Health Sciences. It provides learners with a solid foundation for progression into Health and Health Science sectors. Example career options include Medical Sciences, Occupational Therapy, allied Health and Sciences including Life Sciences, Clinical Biomedical Sciences, Physiological Sciences and much more. Through the course's fundamentally student-centered approach, students are able to gain valuable insights and experience in a range of settings including hospitals, industry, research institutes and community healthcare.

The course gives students a broad understanding of biological principles including cells, tissues and practical microbiology. This course is ideal for students who thrive in an engaging and hands-on style of learning with less reliance on examinations.

Skills required

Enthusiasm and a keen interest in Health Science and associated professions are key to succeeding in this course. A commitment to hard work and the ability to work as part of a team are important skills. Good research and investigative techniques will support you in the completion of coursework, along with the ability to organise your time effectively.

Method of assessment

This course offers a student-centered approach and provides opportunities for students who lack confidence in examinations to gain important UCAS points through coursework completed throughout the year. Assessment is an even mix of externally set and marked exams and internally assessed coursework units (including case studies, information booklets, essays, discussion based exercises and presentations).

Progression

The AAQ in Human Biology carries UCAS points and is recognised by higher education providers as contributing to admission requirements of many relevant applied Human Biology/Health Science courses. When combined with other qualifications within a two-year study programme, such as A-Levels, learners can progress into higher education, such as: Occupational Health, Nursing, Midwifery or Sport Science.

Vocational/AAQ APPLIED SCIENCE

Examination board: OCR

Entry qualification: Grade 4 or above in GCSE English Language, Grade 4 or above in GCSE Maths and Grade 4-4 or above in Combined Science (or 4-4-4 in Triple Science)

Course description

This course consists of units of study which are adapted to equip you with the skills and knowledge needed to pursue a career in a variety of sectors including biomedical sciences, nursing, sports science, forensics, lab technical work or research.

Learners on the course will study five units. These will include in-depth study of Biology, Chemistry and Physics leading to exams, as well as coursework-based units focusing on experimental and scientific investigative skills and looking at how scientists develop and communicate ideas in modern society. During the course you will visit and gain experience in external science organisations and industry and attend talks.

Skills required

An interest in science and associated professions, as well as a commitment to hard work are required. Students will also need to be enthusiastic, able to organise their time effectively and work as part of a team.

Method of assessment

Overall there is a roughly 50:50 mix of examined and coursework based content. Coursework tasks may include case studies, information booklets, essays, discussion based exercises and presentations. Two or three of the units will be externally assessed by written exams. This course offers a student-centered approach and provides opportunities for students who lack confidence in examinations to gain important UCAS points through coursework completed throughout the year.

Progression

This qualification is primarily designed to support progression to applied science and related employment after further study at university. However, it also supports students progressing directly to employment when applying for a range of entry-level industry training programmes and/or Higher Apprenticeships in science and industry, such as engineering or laboratory science technician, the NHS or the education sector. The requirements of the Applied Science qualification will mean that students develop the transferable and higher-order skills that are highly regarded by higher education and employers.

Vocational/CTEC BUSINESS

Examination board: OCR

Entry qualification: Grade 4 or above in GCSE English Language and Grade 4 or above in GCSE Maths

Course description

Vocational qualifications are ideal for students who want to learn by doing and who prefer continuous assessment to end of course exams. You also know your results as you progress through the course rather than waiting for results day. Students will be assessed through both external examinations and internally assessed coursework units covering the business environment, working in business, customers and communication, marketing and market research and principles of project management.

Skills required

A commitment to hard work, the ability to undertake independent research, meet deadlines and work as part of a team.

Method of assessment

There are a variety of assessment methods during the course:

- Written assignments based on real businesses
- Traditional exams based on business case studies
- For some practical tasks you will be assessed by the teacher observing you, e.g. when running an event

Progression

After this qualification, you can progress directly to employment; however it is likely that you will do so via higher study. Areas of employment include junior business roles in marketing, administration, finance, events management, HR, marketing and other related areas in the business sector, including higher apprenticeships.

Vocational/BTEC

CREATIVE DIGITAL MEDIA PRODUCTION

Examination board: Edexcel/Pearson

Entry qualification: Grade 4 or above in GCSE English Language, Grade 4 or above in GCSE Maths and Grade 4 or above in any GCSE Visual Art subject

Course description

The course is designed to be adaptable to your needs, interests and career aspirations which give learners an introduction to ideas and concepts in film and television production. Providing further opportunities for you to develop your own portfolio of work, in such areas as, script writing, studio lighting, multi camera techniques, storyboarding, film editing.

The course provides a vocational alternative to traditional A-Level courses, enabling students to experience real working situations. We recommend that you choose this option if you are significantly better at coursework than examinations and wish to build a rich portfolio of work in preparation for interviews for further education and or job applications within the film and television industries. This course would work well with an A-Level such as Photography or English.

Skills required

A commitment to hard work; the ability to undertake independent research, meet deadlines and work as part of a team. A strong interest in the visual world is essential and an interest in using and manipulating hardware such as cameras and lighting and the use of digital software such as Adobe CC to generate personal and collaborative outcomes. You will need a willingness to research and develop ideas and show the ability to work to deadlines, requiring a high level of motivation. You will also be required to produce in-depth written analysis and research into the work of film makers, animators etc.

Method of assessment

Assessment of all units is through assignments which cover the grading criteria for the unit. A variety of assessment methods will be used including coursework, witness statements, presentations and developing and exhibiting your own work. The assignments will be based on realistic scenarios for learners to apply their knowledge and make maximum use of practical activities, with some units externally set and externally assessed.

Progression

Students progress to higher creative courses at foundation level and then degree level in a related media/film/arts subject. Students also move into a number of creative careers as an artist, designer, teacher, animator, illustrator, fashion designer, textiles designer, film and tv production work, including higher apprenticeships.

Vocational/AAQ HEALTH & SOCIAL CARE

Examination board: OCR

Entry qualification: Grade 4 or above in GCSE English Language, Grade 4 or above in GCSE Maths and Grade 4-4 or above in Combined Science (or 4-4-4 in Triple Science)

Course description

Health & Social Care will develop your knowledge, understanding and skills to meet the needs of the sector and also the academic requirements to study at university. The Health and Social Care department aim to provide an excellent platform for students interested in careers in health, social care or childcare, and build lifelong skills that are applicable to society today.

The qualification develops a deep common core of knowledge, understanding and skills in this sector through examined and coursework units.

Skills required

A commitment to hard work, the ability to undertake independent research, numeracy skills, critical, evaluative and analytical skills.

Method of assessment

For this qualification, students must complete the following units:

- F090 Principles of health and social care
- F091 Anatomy and physiology for health and social care
- F092 Person-centered approach to care
- F093 Supporting people with mental health conditions
- F095 – Investigating public health
- F096 Supporting people in relation to sexual health, pregnancy and postnatal health

Progression

This course is aimed at students who want to progress to higher education and ultimately to employment in the health and social care sector in careers such as midwifery, social work, public health and many more.

BELONGING - EQUALITY - KINDNESS - AMBITION - RESPECT - DETERMINATION



Langley Park
School for Girls



Langley Park School for Girls Co-Educational Sixth Form

Today's Learners, Tomorrow's Leaders

Hawksbrook Lane, South Eden Park Road, Beckenham, Kent, BR3 3BE

Headteacher: Mr Steve Whittle

Telephone: 020 8369 5200

Email: info@lpgs.bromley.sch.uk

Website: www.lpgs.bromley.sch.uk

*Part of Impact Multi Academy Trust,
Registered Office: Langley Park School for Girls
A company limited by guarantee registered in
England and Wales with number 07697400*

