



# Year 7 Welcome and Information Evening

**Meet the Form Tutor**



# Tonight's agenda

6pm – Meet the Tutor - Classrooms

6.30pm - Presentation with key staff – Main  
Hall

# Form Time

15 minutes in the morning

20 minutes at the end of the day

Attendance tracking

Daily planned Form Time tasks

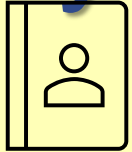
Assemblies

Uphold values and celebrate successes



Enabling everyone to thrive – acting with kindness, determination and respect.

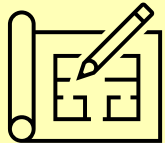
# AM Registration Routines – Ready for the Day



Student Learner Handbook and pencil case on the desk



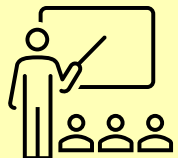
Silent reading – is the Do Now task



Daily Activity



Uniform & Lanyard check – COs logged for any corrections needed

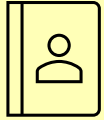


Row by row dismissal

**Enabling everyone to thrive – acting with kindness, determination and respect.**



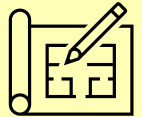
# PM Tutor time Routine – End well



Student Learner Handbook and pencil case on the desk



Silent reading/Do Now task



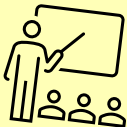
Daily activity



Uniform & Lanyard check – C1/2s logged for any corrections needed



House Points (P Points)



Row by row dismissal – Detention reminders

**Enabling everyone to thrive – acting with kindness, determination and respect.**

# Year 7 Weekly Plan

		7
<b>Mon</b>	<b>am</b>	<b>Silent <u>rdg</u></b>
	pm	Assembly
<b>Tues</b>	<b>am</b>	<b>Silent <u>rdg</u></b>
	pm	PSHCE
<b>Wed</b>	<b>am</b>	<b>PSHCE</b>
	pm	Reading
<b><u>Thur</u></b>	<b>am</b>	<b>Langley Lowdown</b>
	pm	WFD
<b>Fri</b>	<b>am</b>	<b>Silent <u>rdg</u></b>
	pm	Current Affairs



Enabling everyone to thrive – acting with kindness, determination and respect.

# Form Time Reading Programme



Reading holds all sorts of intellectual advantages: the more you read the more intelligent you will become.



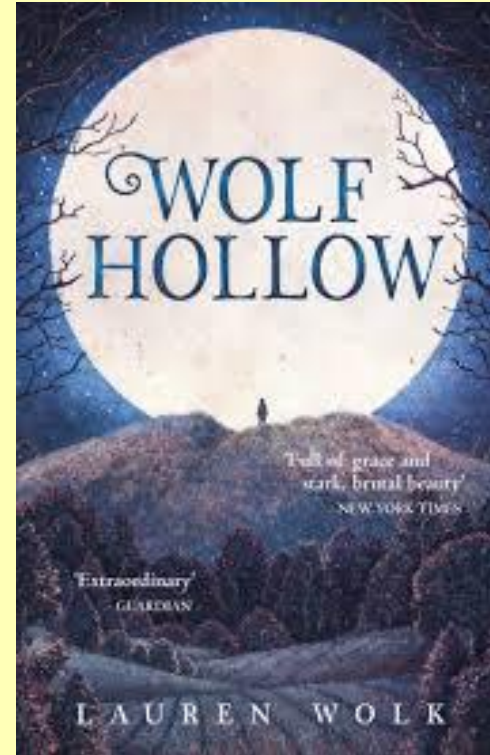
Enabling everyone to thrive – acting with kindness, determination and respect.

# What is the Form Time Reading Programme?



Once a week the Form Tutor will read aloud to the Form Group.

This term we are reading:



Enabling everyone to thrive – acting with kindness, determination and respect.

# PSHCE at KS3

Form Time

Timetabled lessons

PSHCE Days

Enrichment Week



Enabling everyone to thrive – acting with kindness, determination and respect.

# Equality, Diversity and Inclusion



Enabling everyone to thrive – acting with kindness, determination and respect.

# Current Affairs



- Weekly Quiz
- Newsround



Enabling everyone to thrive – acting with kindness, determination and respect.

# The Langley Way

## The Langley Way

At Langley Park School for Girls we value...



### Belonging

We wear our uniform with pride



We actively participate in lessons



We get involved in extracurricular activities



We wear our lanyards to support safeguarding



### Equality

We celebrate differences



We respect other people's beliefs



We show understanding and empathy for the needs of others



### Kindness

We are deliberately kind



We acknowledge and appreciate acts of kindness



#TEAM

LPGS

### Ambition

We aim high



We have a growth mindset



We take pride in our achievements



We celebrate the success of others



We attend school on time everyday



### Respect

We listen carefully without interrupting



We respect staff



We respect ourselves and each other



We respect the school environment



We follow staff instructions first time, everytime



We respond to staff and students with politeness and warmth



We arrive on time to lessons - ready to learn



We do not disrupt the learning of others



When we make mistakes we apologise meaningfully



### Determination

We work to the best of our ability



We learn from our mistakes



We try - especially when it is difficult



### At LPGS we...

walk on the left and follow one way systems



have our phones out of sight, when on site



attend detentions



accept responsibility for our actions



do not chew gum



We have the correct equipment for school



Belonging · Equality · Kindness · Ambition · Respect · Determination

www.dooda.ac ©2025

# Mobile Phones



Off in bags

Out of sight

# LPGS Uniform consistency: Are you good to go?



- BAGS are backpacks
- JACKETS are black or navy and can be worn in corridors/canteens (hoods down) but not in classrooms

- HAIR colour is natural
- Hair bands and all scarfs are navy/black
- No MAKE-UP
- NAILS are natural and finger-tip length

1 STUD EARRING per ear  
• It should fit in this circle  
No other jewellery



Black SHOES that can be polished.  
• Not trainers (e.g. Airforces) or boots



BLAZER (Y7-Y9)  
CARDIGAN (Y10-Y11)



OPEN NECKED white shirt (long or short sleeve)  
LANYARDS must be worn and visible at all times



Plain navy SOCKS  
(ankle or knee)



Navy v-neck JUMPER is optional



Langley SKIRT is worn between mid-calf and knee  
Langley TROUSERS with logo on



## WHY?

Uniform is a key way we signal we **belong** to one community and uphold our **high standards** and **reputation** that benefit everyone. We also believe in the **liberating** environment that a girls' school can provide; our expectations regarding hair, make-up, nails and jewellery are part of focusing on who we are on the inside. Thank you for **respecting** our uniform.

# Shoes – additional guidance



Good for school



Not okay for school



Enabling everyone to thrive – acting with kindness, determination and respect.

# Jewellery & accessories – additional guidance



**Good for school**



**Not okay for school**



**Enabling everyone to thrive – acting with kindness, determination and respect.**



# Make-up / 'beauty enhancement' – additional guidance

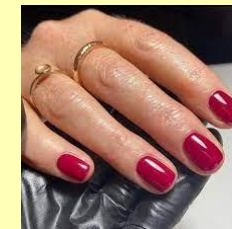


**Good for school**



**Not okay for school**

Unnatural colours / fake eye lashes / long coloured nails / fake tan



**Enabling everyone to thrive – acting with kindness, determination and respect.**

# Attendance



High attendance supports high achievement

Students complete missed work

# Guidance for Absence



Hospital appointment  
which cannot be  
arranged outside school  
hours

Attendance at  
examinations (such as  
music grades)

Attendance at funeral  
(immediate family only)

Religious observance  
(this must not exceed 4  
days)

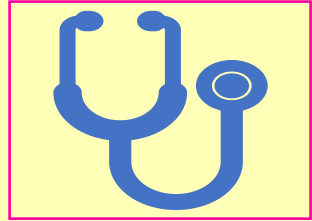
Participating in a  
significant extra-  
curricular activity (e.g.  
sport, performing art)



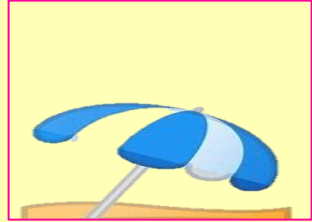
Enabling everyone to thrive – acting with kindness, determination and respect.



# Unauthorised Absence



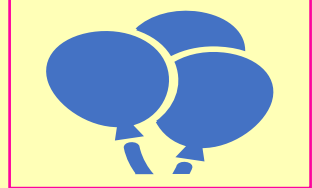
Medical



Holiday



Leisure



Birthday

Report absence via  
the app – Studybugs

# Entering and Leaving the School Site

---

At 8:05, the student entrance opens and students should enter through this gate. All students must be in Form Time by 8:30.

---

Breakfast is available for all students from 8:05.

---

Schools finishes at 15:10 unless attending extra-curricular activity or a detention.

---



Enabling everyone to thrive – acting with kindness, determination and respect.



# Communication routes



---

Letters

---

Planner

---

Email (staff initials followed by @lpgs.bromley.sch.uk)

---

Telephone

---

Social Media

---

Surveys

# Any Questions?



Enabling everyone to thrive – acting with kindness, determination and respect.